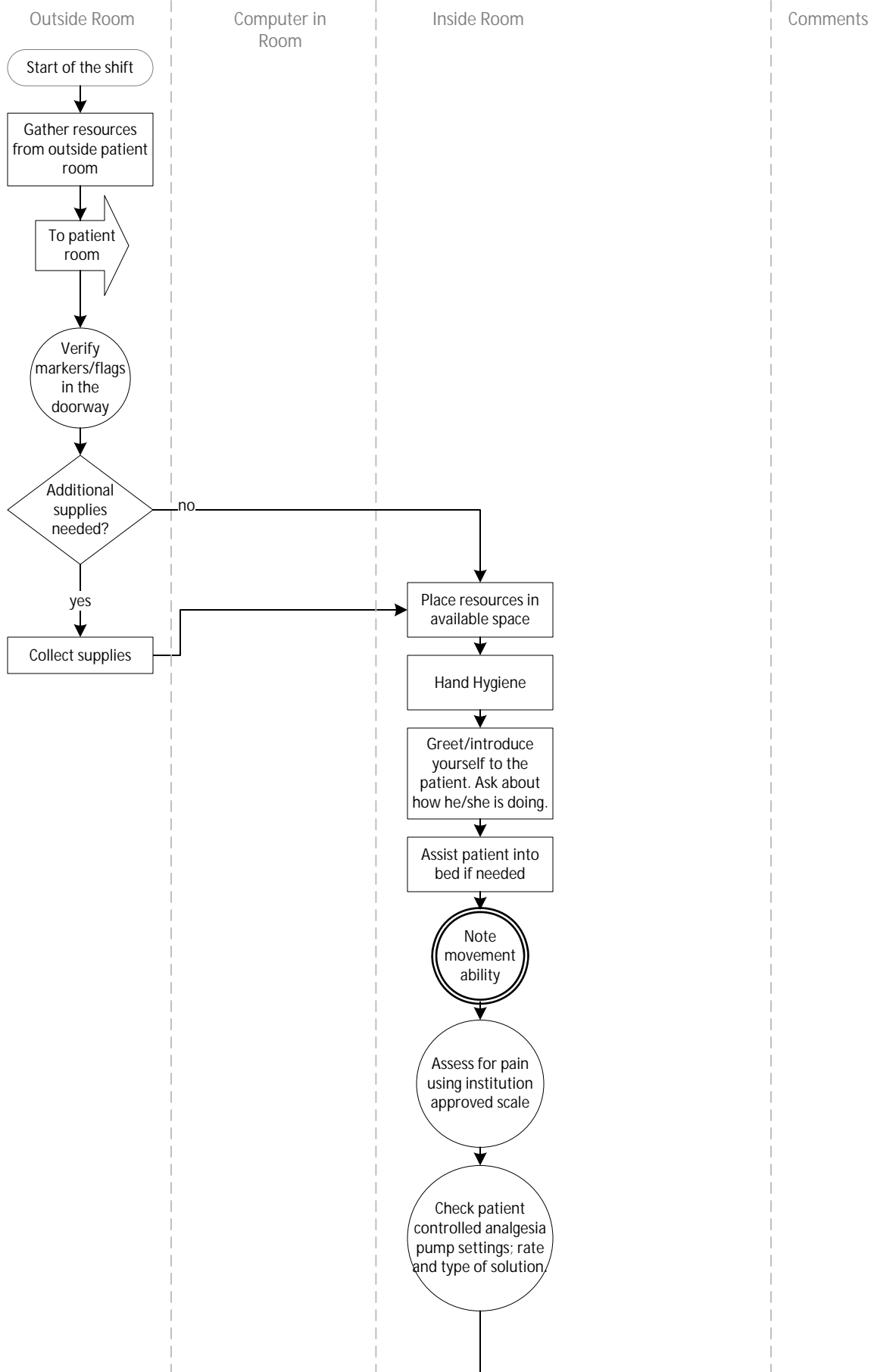
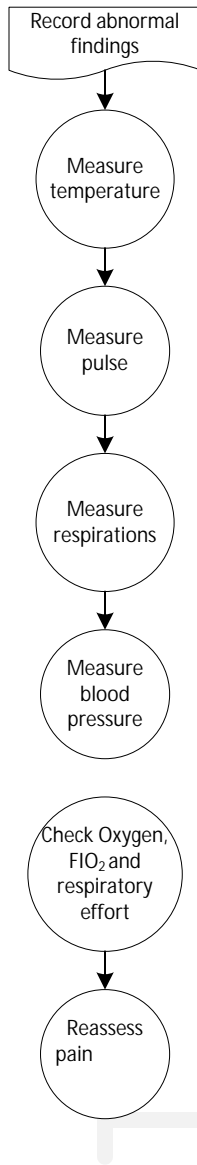



Assessment Process

August 3, 2015





Document in piece of paper before inputting data in computer



Check fitting of
oxygen mask/
nasal prongs,
if needed

↓

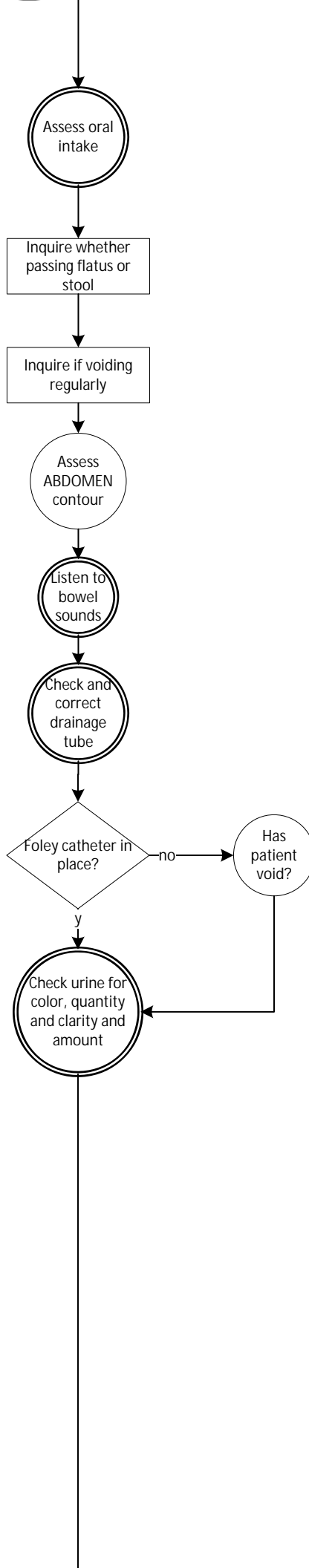
Check pretibial edema using institution approved scale

Palpate posterior tibial or dorsalis pedis

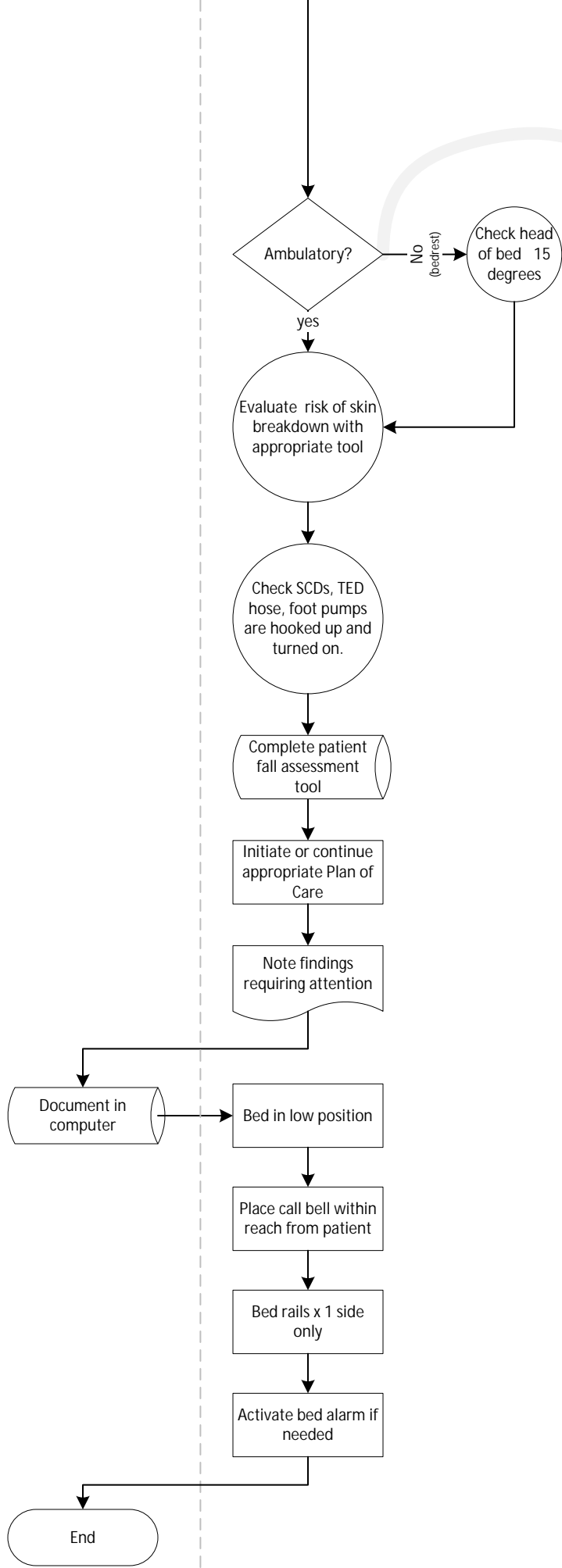
Note skin color

↓





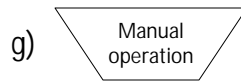
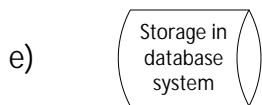
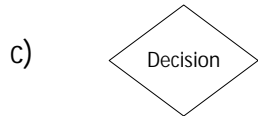
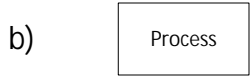
Needs to know diet orders. Do they check it right before this step or they are supposed to know this before coming to the room?



Needs to know activity orders. Do they check it right before this step or they are supposed to know this before coming to the room?

Safety precautions before leaving the room

Adapted from: Jarvis, C. (2012). Physical Examination and Health Assessment (6th ed.). St Louis, MO: Elsevier Saunders.



Evaluate the quality of the output compared to a standard, often using a measuring device.

Using information from the process to make a decision or determine future actions. Often followed by a decision or by a documentation.